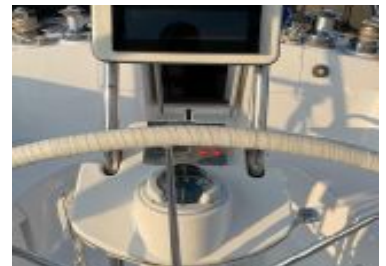


46 ft 2006 Hunter 46LE
US\$195,000
Anacortes, Washington, United States



Boat Details

Make:	Hunter	Class:	Sloop
Model:	46LE	Hull Material:	Fiberglass
Year:	2006	Beam:	14 ft
Length:	46 ft	Boat Location:	Anacortes, Washington, United States
Price:	US\$195,000	Heads:	2
Condition:	Used	Fuel Type:	Diesel



Russ Meixner | West Yachts

West Yachts LLC, Anacortes, Washington, United States

Tel: **360-299-2526**

russ@west-yachts.com

www.yachtworld.com/westyachts

Description

PRICED FOR QUICK SALE!!!

BY APPOINTMENT ONLY

Hunter's 46 hull is broad and voluminous. The boat's rig and deck are designed for speed and simple handling, but it's the 46's abundance of living space and creature comforts that outshine other boats. The first thing you'll notice is that the bow is a lot more plumb than many other sailboats, more like a power boat. The 46's relatively wide 14' beam amidships carries well aft, not tapering back sharply to a narrow stern. Under the waterline, the Hunter's bottom is fatter than many fast sailing hulls, and this helps keep you on "an even keel" - another trait that power boaters appreciate. The hunter 60LE can be sailed single handed.

Information & Features

Dimensions

LOA: **47 ft**

Beam: **14 ft**

Accommodations

Heads: **2**

46' Hunter 46LE (Luxury Edition) 2006

Specifications:

- LOA - 47'
- LOD - 46'
- LWL - 39' 8"
- Beam - 14'
- Draft - 5' 6"
- Displacement - 26,000lbs - Dry
- Ballast - 9,000lbs External Lead
- Mast Height - 63'
- Hull Bottom Below Waterline Construction - Solid Laminate Fiberglass with HKT Kevlar Reinforcements in Strategic Locations with Hull Liner with Structural Grid in the Keel Area
- Hull Above Waterline Construction - Cored End-Grain Balsa
- Hull / Deck Joint - External Flange with Stainless Steel Insert and Vinyl Rub-Rail Over
- Deck Construction - Fiberglass Molded Non-Skid
- Superstructure - Flush Foredeck - Low Profile Cabin Trunk - Large Cockpit with Walk-Thru Transom
- Bulkheads - (10) Lewmar Deck Hatches - (11) Anodized Aluminum Opening Ports & Fixed Ports
- Construction Scantlings - Single Skin Gel Coat Over Multiple Layers of Resin Impregnated Fiberglass
- Keel - Fin with Stainless Steel Keel Bolts
- Rudder - Spade - Foam Filled Fiberglass
- Rudder Post / Gland - Stainless Steel Post / Fiberglass Tube & Bearing
- Designer - Glen Henderson / Hunter Group
- Builder - Hunter Marine Corporation

Tankage:

- FUEL - 100 Gallons in 2 Tandem Cross-Link Polyethylene Tanks - Located Aft - Remote Gauge
- WATER - 200 Gallons in 5 Cross-Link Polyethylene Tanks- Located Under Main Cabin Sole & Under the Forward Berth - Manifold Valves Under Cabin Sole - VEMA Gauge at Nav Station
- HOT WATER - Isotherm - 11 Gallons - 120Volt AC & Engine - **NEW 2019 - 2022**
- WASTE - 50 Gallons in 2 Polyethylene Tanks - Located Under Forward Berth & Aft Head - Discharge for Each Tank - Dockside Pump-Out via Deck Fitting (Port Forward and Starboard Aft) - Forward Head has Y-Valve for Holding Tank Discharge & Overboard Discharge via Macerator Pump - Aft Head has Holding Tank Discharge Only VEMA Gauge at Nav Station
- PROPANE - (2) Vertical 10# Aluminum with Pressure Gauge (1 for Stove & 1 for BBQ)

Interior:

- Sleeps 6 in 3 Private Staterooms
- Master Stateroom - Pedestal Walk-Around Bed - **NEW Custom Mattress - NEW 2019 - 2022**
- Headroom - 6' 6" in Main Salon
- Hot & Cold Pressure Water System - **Updated Jabsco Sensor Max VSD 5.0 (Variable Pump - Much Quieter)** - Spare OEM Pressure Water Pump - Located Under the Aft Seat of the Settee
- Water Heater - Isotherm - 11 Gallons - 120Volt AC & Engine - **NEW 2011**

- Galley Sink - Double Stainless Steel
- Refrigeration - Coolmatic Under Counter Refrigerator
Waeco Under Counter Freezer
- Cooktop / Oven - Force 10 Gimbaled 3-Burner Cooktop with Oven
- Microwave - Tappan
- Large Deck Plexiglass Hatches/Skylights - **Replaced with Solid Glass - NEW 2019 - 2022 (Professionally Done - Very Expensive)**
- Hatch Screens - Located in the Storage Locker Behind the Port Settee - Never Used Around the PNW
- Port Lights - **Removed and Re-bedded in 2019 - 2022**
- Cabin Fan - White Switch on DC Panel "Cabin Fan" - This Toggles a Computer Muffin Fan for Blowing Air Gently Through the Air Conditioning Ducts that Were Already Installed even though there is No Air Conditioning on the Boat.
- Cabin Heating System - Webasto Forced Air Diesel Furnace
- Private Heads (2) - Jabsco Quiet Flush - Freshwater Flush - Macerator (2) Jabsco 12Volt DC -
- Showers (3) - Forward Head, Aft Head and Cockpit Shower
- Cabin Sole - Teak & Holly Veneer Plywood
- Stereo - Bose 3-2-1 Entertainment System (Radio, CD, DVD, TV Control) with Bose Speakers
JVC KD-R520 Located in Cockpit with Waterproof Speakers
Sirius Satellite Receiver
- Television - Samsung 18"
Sharp 15" Flat Screen TV

Mechanical / Electrical:

- Single 2005 Yammer 4JH3-TE Freshwater-Cooled 4-Cylinder Turbocharged 74hp@ 3800rpm (max)
- Engine Hours - 908
- Engine Alternator - Balmar 100 Amp with External Regulator
- Transmission - Kanzaki KM4A - Reduction Ratio - 2.63;1
- Primary Fuel Filters - Racor Dual Strainer System - **NEW 2011**
- Secondary Fuel Filter - on Engine
- Shaft - 1 1/4" Stainless Steel
- Stuffing Box - Bronze Packing Gland - Flexible Mount
Adjustable Packing Gland Wrench
- Rudder Post - Stainless Steel - Which Proved to be Stronger than Carbon Fiber Rudder Posts
- Propeller - Flex-O-Fold 3-Blade Folding Bronze
- Propeller - Spare - Original Fixed 3-Blade Prop - Located under Floorboards Near Forward Head
- Engine Oil Changer System with Reversible Pump
- Engine Room Ventilation - 12Volt DC and Natural
- Helm Steering Wheel - Edson Access Stainless Steel Wheel with Leather Cover
- Steering Gear - Lewmar Pedestal and Rack & Pinion System
- Bilge Pumps - Manual - Diaphragm Located in Cockpit
Electric - RULE 1500 with Surebail Float Switch Located at Bottom of the Sump

RULE 4000 with Rule-A-Matic Float Switch

- Batteries - Engine - (1) AGM - **NEW 2011**
House - (2) AGM - **NEW 2011**
- Inverter/Charger - Xantrex Sine-Wave Freedom 2000 with Control Panel - **NEW 2011**
Xantrex Inverter/Charger Control Panel - **NEW 2011**
Xantrex Link 10 Battery Monitor - **NEW 2011**
- Solar Panels - (3) 530Watt Solar Panels - **Updated to 3 Panels - 2011**
Midnight Solar MPPT Charge Controller - **NEW 2011**
- Shower Power - (2) 30amp Inlets & (1) 50amp Cable
- Isolation Transformer
- Pre-Wired for WindGenerator
- Thru-Hull Fittings - Bronze Below Water Line
- Sea valves - All Bronze Ball Valves Labeled
- Raw Water Strainers - Bronze - Engine Intake

Navigation / Communication:

- Compass - Danforth Global Balance - Pedestal Mounted
- VHF- ICOM ICM-1402 with Commander MIC Handheld Extension at Helm
- Autopilot - Raymarine - 6001 with S100 Cordless Handheld Remote
- Speed/Log - Raymarine ST60 Speed
- Depth - Raymarine ST60 Depth
- Wind - Raymarine ST60 Wind Speed & Direction
Davis Windex Vane - Wind Direction only
- Radar - Furuno 1st Watch Wireless - **NEW 2019 - 2022**
- Chartplotter - Furuno at Cockpit Helm - **NEW 2019 - 2022**
Furuno at Nav Station - **NEW 2019 - 2022**

Mast / Rigging / Sails / Winches:

- Type of Rig - Sloop
- Rigging Details - B 7 R Rig with Double Spreaders
- Mast - Single Selden Anodized Aluminum & Boom
Mast Decked Stepped with Compression Post
- Roller Furling - Furlex
- In-Mast Furling - Selden
- Rigid Boom Vang - Selden Rodkicker
- Spinlock Line Stoppers - (1) 4-Line / (1) Triple-Line / (1) Single Line
- All Lines Lead Aft
- Sail Inventory - Main - UK Halsey - Dacron Furling Main
Jib - UK Dacron Furling - 110%
Jib - Dacron Furling 85%

Spinnaker - North G3 Nylon - Spinnaker Sheets (White Braided Lines) - Located in Port Aft Cockpit Locker - Spinnaker Stowed in it's Launch Sock in the Launch Bag in the Port Aft Stateroom. North Sail advertised that G3 spinnaker as a "set it and forget it" sail, which the current owner did not **believe until the first he ran with it. The boat handled beautifully. The Hood high-clew 85% jib points like a demon, and was perfect for the summer winds of San Francisco Bay. It balances the boat nicely.**

- Standing Rigging - 1x19 Stainless Steel Wire - **Inspected 2018**

Terminals - Swaged

Turnbuckles - Stainless Steel - **NEW 2018**

Chainplates - Stainless Steel - **Hunter Early Recall - NEW Beefer Chainplates**

- Pair of Rig Cutters - Located in the locker below the Starboard guest cabin mattress near the transformer
- Running Rigging - Dacron Braid
- Winches - (4) Lewmar #48 Self Tailing with 1 Electric
(2) Antal W47

Ground Tackle:

- Anchor Windlass - Newmar Horizontal with Gypsy & Capstan
- Anchors - Rocna 55# Plow Type - Primary
Guardian G-137 Aluminum Fluke Type - Secondary
- Chain - 200' of 5/16" Chain
- Nylon Rode - 80'
- Drogue Sea Anchor - Located Under the Aft Seat of the Settee
- Bow Roller - Dual Roller on Stainless Steel Fitting Integral to Stem Chainplate
- The Lines in the Port Lazarettos are used to Stern-Anchor to Land in the Sacramento Delta

Safety:

- Navigation Lights - **Converted Masthead Lights to USCG Approved LED Bulbs**
- Anchor Light
- Emergency Rudder - Scanmar - Anchoring Points are Mounted on the Transom
- Propane Shut-Off Valve - 12Volt DC Safety Solenoid
- Bow & Stern Pulpit - Stainless Steel
- Stanchions / Lifelines - 1" Stainless Steel - Double Wire
- Swim / Boarding Ladder - Stainless Steel Telescopic
- Throwable Devices - Lifesling
(1) Type IV Cushion
- PFD's - (4) USCG Type V Inflatables Type
(20) USCG Type II and III
- VDS - Orion Kit
- Horn / Bell - ECO Horn Compressed Air Handheld Horn / Bell
- Oil & Pollution Placards
- Fire Extinguishers - (3) **Replaced - NEW 2022 to Meet New USCG Regulations**
- Fixed Fire System - Sea Fire FM-200 Automatic System with Discharge Monitor - Override Control at Engine Panel.

- CO Detector - (4) Units 12Volt DC Hard Wired
- High Bilge Water Alarm System - Indicator Light and Buzzer

Miscellaneous:

- Bottom Paint - **NEW 2018 - Epoxy Coated Keel, Adjusted Keel Bolts, Restepped the Mast, Resetting Arch, Solar Panels & Bimini - Complete Tune-Up of Systems - This was after moving the boat from Sausalito to Seattle.**
- Zincs - **NEW August 2022 - Spare Zincs Located Under Floorboards Near Forward Head**
- Radar Arch - Stainless Steel with Custom Support for the Solar Panels
- Cockpit Stern Seats (2) - Port & Starboard - Integral to Stern Pulpit
- Cockpit - Custom Teak & Holly Table
- Transom Davits
- BBQ - Dickenson Propane Sea-B-Que
- Fenders - (4) with Fender Covers
- Docking Lines - (5) **NEW Dark Blue**
Miscellaneous Braid & 3-Strand White
- Canvas - Iverson's Design Custom Dodger - **NEW 2019 - 2022 (cost \$9,000)**
- Staging & Personal Items to Be Removed at Time of Sale

Disclaimer

The Company offers the details of this vessel in good faith but cannot guarantee or warrant the accuracy of this information nor warrant the condition of the vessel. A buyer should instruct his agents, or his surveyors, to investigate such details as the buyer desires validated. This vessel is offered subject to prior sale, price change, or withdrawal without notice.

